

What is the Community Choices Waiver program?

The Community Choices Waiver (CCW) program gives you the help you need to stay at home for as long as possible. **This program DOES NOT provide help 24 hours per day.**

What does the CCW program provide?

- **Support Coordination:** A support coordinator helps you get the services that you need (also known as case management).
- **Personal Assistance Services:** Helps with basic self-care such as bathing, dressing, preparing meals, etc.
- **Adult Day Health Care (ADHC) Services:** Health/medical care and social services provided in a community-based ADHC center.
- **Assistive Devices and Medical Supplies:** Devices and systems, medical equipment and supplies.
- **Personal Emergency Response System:** A device that you wear on your neck that calls for emergency help when you push a button.
- **Assistive Technology:** A service that gives you an electronic tablet device, a screen protector and a protective case.
- **Financial Management Services:** If you want to hire your own workers that help you with your basic self-care needs, a provider helps you with payroll.
- **Environmental Accessibility Adaptations:** Home modifications such as ramps, widened doorways, grab bars, roll-in shower, etc.
- **Therapy Services:** Physical, occupational, speech/language therapies.
- **Nursing Services:** A nurse can provide care in your home that is necessary for you.
- **Home Delivered Meals:** Up to two meals per day delivered to your home.
- **Caregiver Temporary Support:** Short-term relief for caregivers to give them time for rest (also known as respite care).
- **Permanent Supportive Housing (PSH):** Helps you get a house or apartment.
- **Monitored In-Home Caregiving (MIHC):** A principal caregiver lives with you and helps you with basic self-care such as dressing, bathing, etc.



If you are in a nursing home, you can get the following services:

- **Transition Intensive Support Coordination:** A support coordinator helps you move out of the nursing home.
- **Transition Services:** Pays for items that you need when you are moving out of a nursing home.

Who can qualify for the CCW program?

People who:

- Meet long-term care (LTC) Medicaid eligibility **AND**
- Are 21 years old or older **AND**
- Meet nursing home level of care

What are the resource limits?

Resources are the things you own. We count resources for this program; we do not count your home, the car you drive to medical appointments or other basic resources.

- If you are single, you can have no more than \$2,000 in resources. Couples can have no more than \$3,000 in resources when both spouses receive long-term care.
- Married couples can have up to \$162,660 in resources, as long as one spouse at home **does not** receive long-term care services.

What are the current monthly income limits?

The income limits are \$2,982 for an individual and \$5,964 for a couple (when both spouses need long-term care).

“Waiver Spend-Down” that might work for you even if your income is over the limit. Waiver Spend-down has a standard \$20 income deduction. \$65 and half of the remainder are also deducted from all earned income. After the income deductions are applied, the average monthly waiver rate (currently \$5,000 for OAAS waivers) and other allowable incurred medical expenses are used to “spend down” an individual’s excess income, qualifying the individual for Waiver.

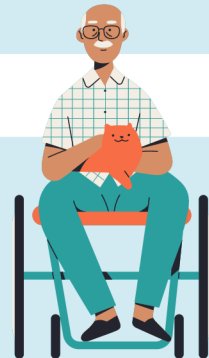
Allowable incurred medical expenses include Medicare and private health insurance premiums, deductibles, coinsurance or copayment charges, and medical/remedial care expenses incurred by an individual that are not subject to payment by a third party. An individual qualifying under Waiver Spend-Down may have to pay toward the cost of their care. The individual’s liability is based on their income after the income deductions are applied. All individuals are allowed to retain a basic needs allowance from their income which is equal to \$2,982 and the amount of incurred medical expenses not paid by a third party. Any remainder will be the individual’s liability for the cost of care in Waiver Spend-Down.

How can people request CCW services?

The Department keeps a list of people and the date they asked for the Community Choices Waiver (CCW). People are offered the CCW program according to the following priority groups:

1. People who have been abused or neglected and are referred by protective services who, without CCW services, would need to go to a nursing home to prevent further abuse and neglect.
2. People diagnosed with amyotrophic lateral sclerosis (ALS), also known as Lou Gehrig's disease.
3. People who are residing in a State of Louisiana Permanent Supportive Housing (PSH) unit or who are linked for the PSH selection process.
4. People living in a nursing home and Medicaid is the only payer of the nursing home services.
5. People who require expedited waiver services, who are approved for 32 hours of Long Term-Personal Care Services (LT-PCS) and will require nursing home placement, unless offered an expedited waiver opportunity.
6. People who are not getting services from the Program of All-Inclusive Care for the Elderly (PACE), Long Term-Personal Care Services (LT-PCS), or another Home and Community-Based Services (HCBS) program paid for by Medicaid.

Everyone else will get a CCW offer on a first-come, first-served basis based on the date they asked for services.



**If you want to add your name to the CCW list
OR
if you have questions about Home and Community-Based Services
(HCBS) that OAAS provides, please call:**

**Louisiana Options in Long Term Care
1-877-456-1146
TTY: 7-1-1 for individuals
with hearing or speech difficulties**

**Monday through Friday, 8 a.m. to 5 p.m.
The call is FREE!**